

Green Steam Products

Technical Note: DCC Lighting

© 2001 Green Steam Products
Parker, CO

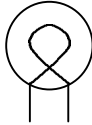
Standard Bulb

Miniaturics 18C0310

1.5 volt

30 ma.

1.2 mm diameter

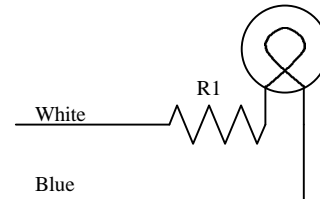


Notes:

- Command Station set on "HO" scale.
- Resistor values are chosen to slightly under power light bulbs for increased longevity.
- Insulate all electrical connections with heat shrink tubing to prevent decoder damage.
- Drawings show connections for headlight (Function #0, white wire). For rear light use yellow wire, Function #4.

Single Bulb Function

Resistor R1 = 430 ohm 1/4watt



Two Bulbs in Series

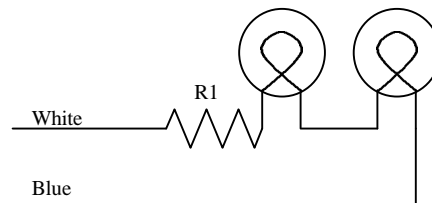
PROS:

- Less current draw from your function output.
- Smaller wattage (physical size) resistor.

CON:

- If one bulb burns out, both bulbs go off.

Resistor R1 = 390 ohm 1/4watt



Two Bulbs in Parallel

PROS:

- If one bulb burns out, the other remains lit.

CONS:

- More current draw from your function output.
- Larger wattage (physical size) resistor.

Resistor R1 = 220 ohm 1 watt

